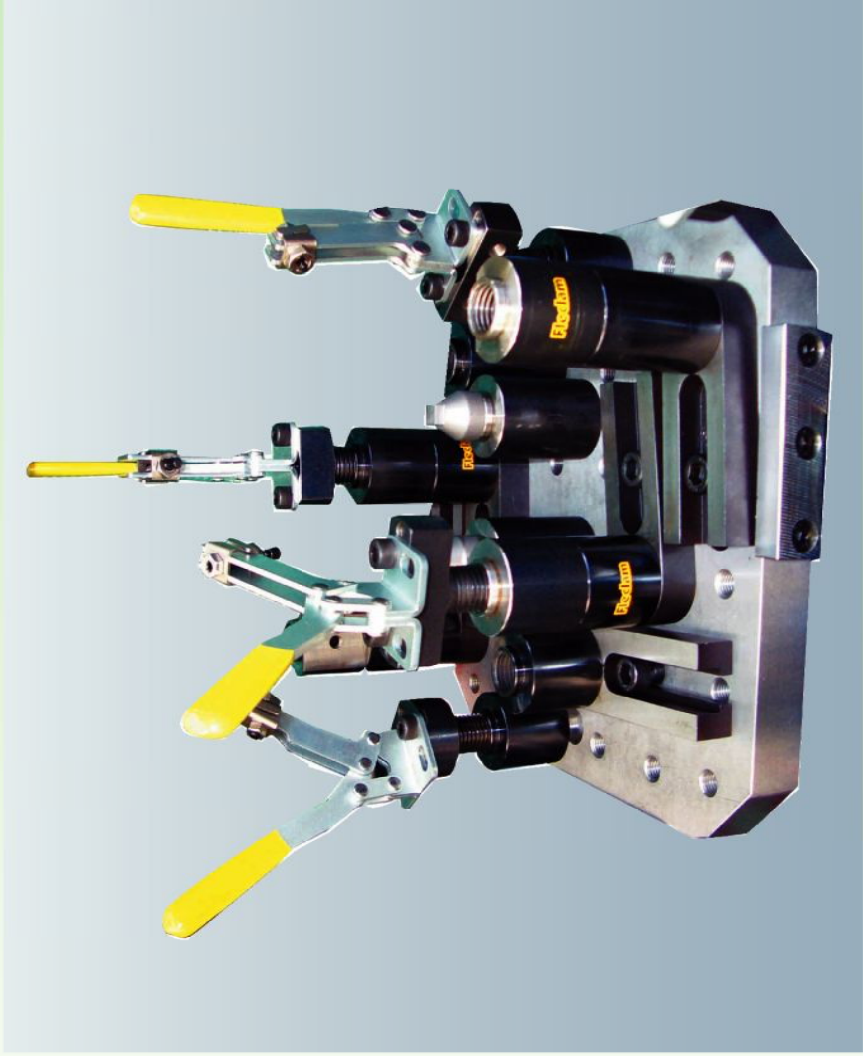
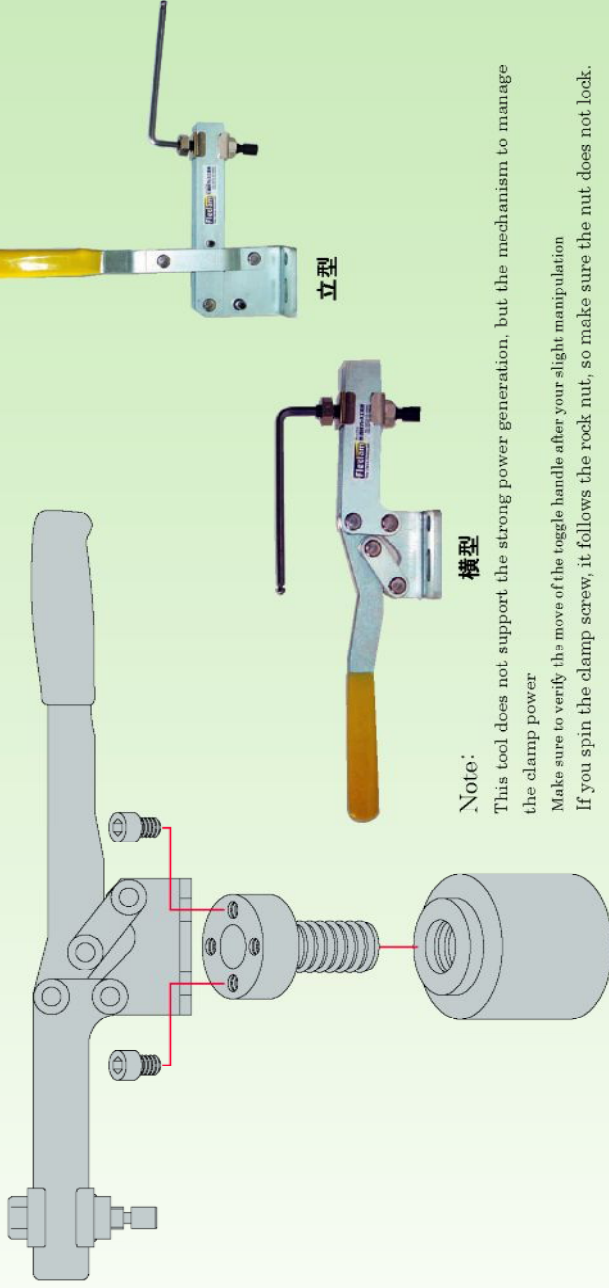


Fleclam Toggle Clamp



You can tune the clamp power even after clamped

- Clamping by hand is possible
- By using torque wrench, the clamp power can be tuned
- Quick set-up and re-arrangement



Note:

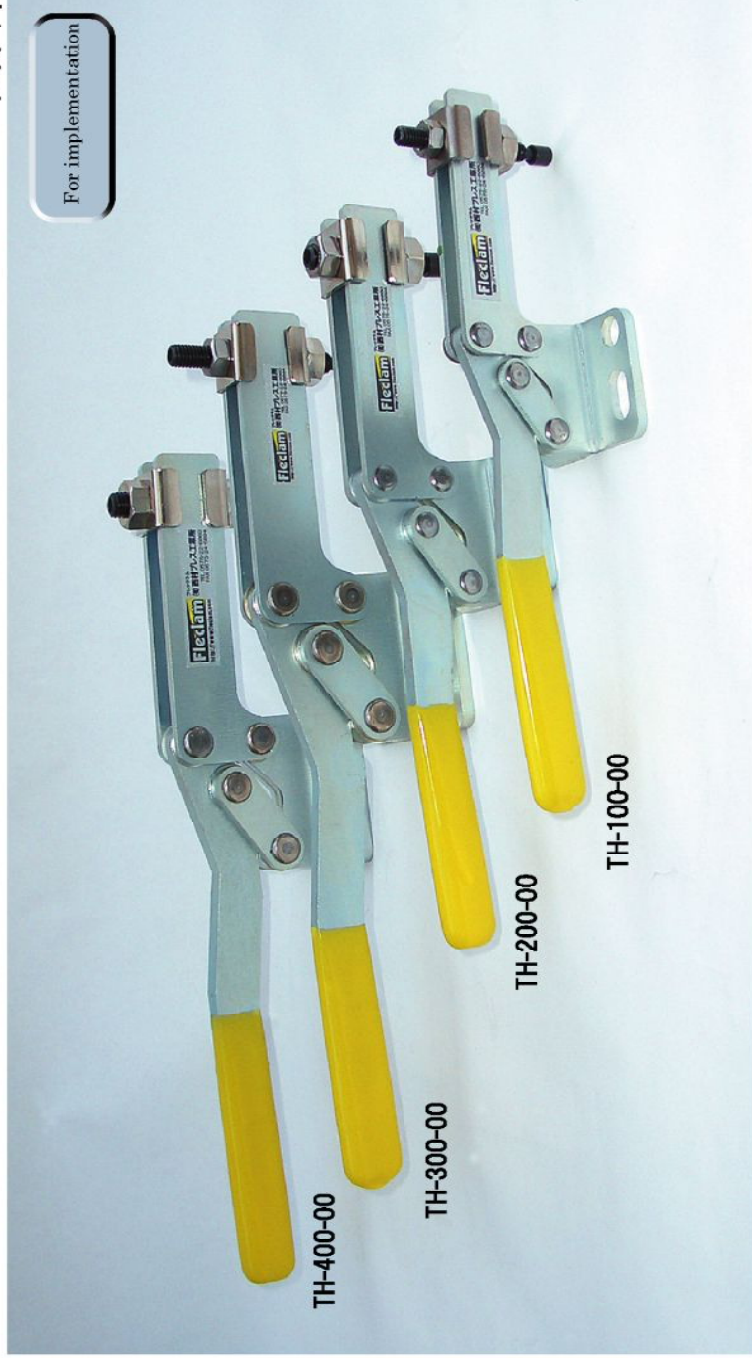
This tool does not support the strong power generation, but the mechanism to manage the clamp power

Make sure to verify the move of the toggle handle after your slight manipulation

If you spin the clamp screw, it follows the rock nut, so make sure the nut does not lock.

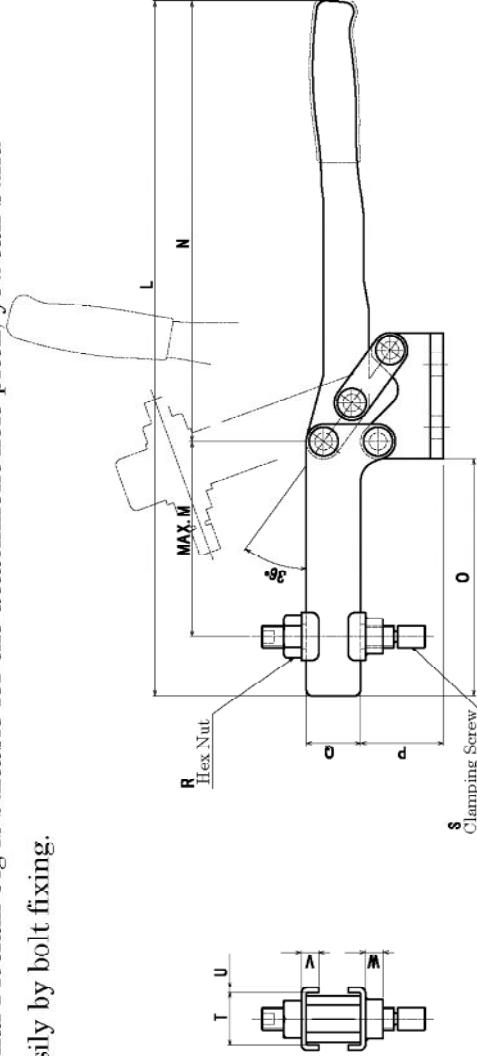
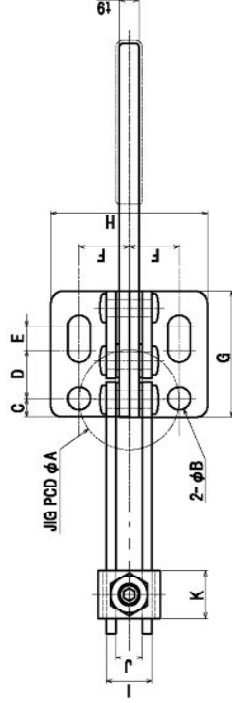
Toggle Clamp (Horizontal model)

PAT.



Part No.	Price
TH-100-00	
TH-200-00	
TH-300-00	
TH-400-00	

As the optional Fleclam Jig is suitable for the attachment hole pitch, you can build them up easily by bolt fixing.

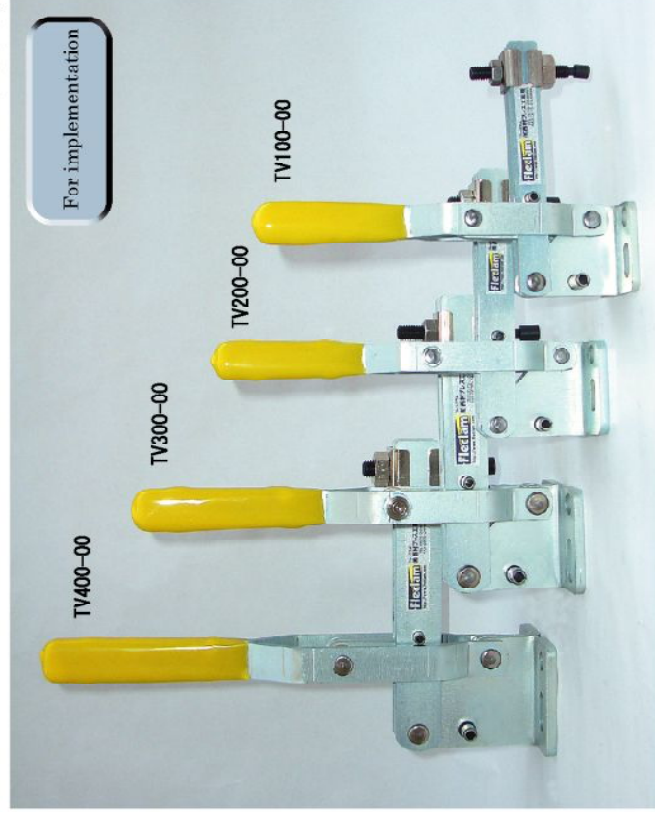


Material : Main body SS400 Surface treatment : Kurometo
 Grip Chloride Vinyl

型番	A	B	C	D	E	F	G	H	I	J	K	L	M	N	O	P	Q	R	S	T	U	V	W
TH-100-00	40	8.5	6	15	6	17.5	37	50	11.1	6.5	16	206	70	130	72	28	15	M6	M6 x 50	13.5	1.6	5	4.5
TH-200-00	40	8.5	6	15	8	17.5	44.5	54	15.6	9.2	19	232	80	140	87	31	19	M8	M8 x 50	18	1.6	6	6
TH-300-00	46	10.5	8	22	11	23	57	70	15.6	9.2	19	300	95	192	97	36	24	M8	M8 x 70	18	1.6	6	6
TH-400-00	46	10.5	8.5	22	11	23	58	72	21.2	12.2	22	320	105	202	110	38	25	M10	M10 x 70	24	2.3	8	8

Toggle Clamp (Vertical model)

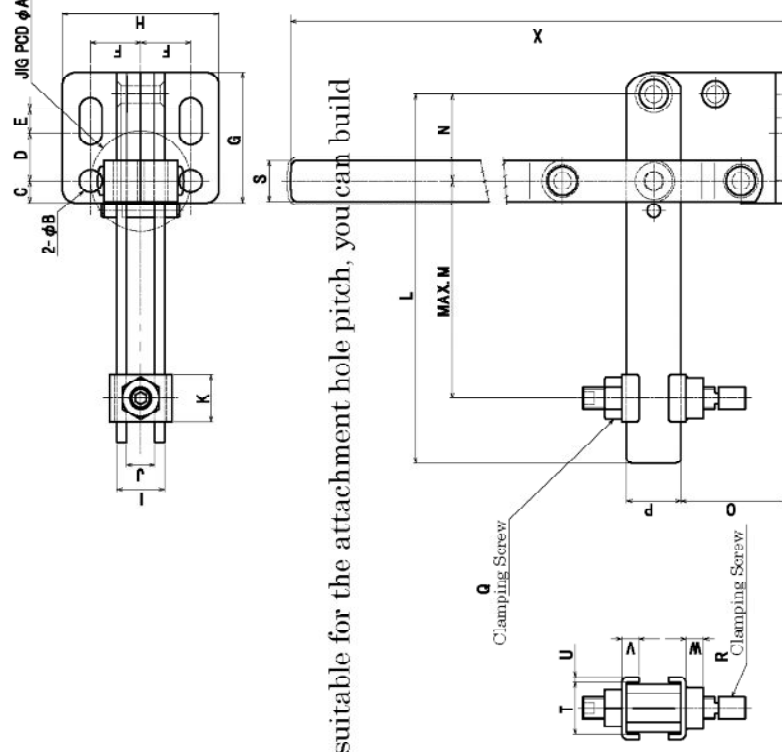
P.A.T.



Part No.	Price
TV-100-00	
TV-200-00	
TV-300-00	
TV-400-00	

Toggle Clamp

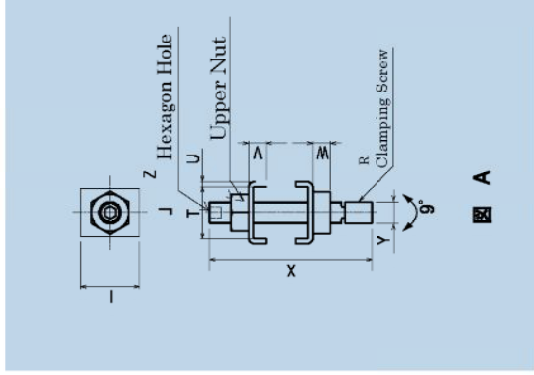
As the optional Fleclam Jig is suitable for the attachment hole pitch, you can build them up easily by bolt fixing.



Material: Main body SS400 Surface treatment: Kurometo
Grip Chloride Vinyl

型番	A	B	C	D	E	F	G	H	I	J	K	L	M	N	O	P	Q	R	S	T	U	V	W	X
TV-100-00	40	8.5	6	15	6	17.5	37	50	12.4	6.4	16	106	75	25	32.5	13	M6	M6×50	13	13.5	1.6	5	4.5	149
TV-200-00	40	8.5	6	15	6	17.5	42	54	15.4	9	19	123	85	30	38	16	M8	M8×50	13	18	1.6	6	6	171
TV-300-00	46	10.5	8	22	11	23	51	70	16.4	10.4	19	144	100	35	42	22	M8	M8×70	16	18	1.6	6	6	212
TV-400-00	46	10.5	10	22	11	23	60	72	22	13	22	170	120	40	50	25	M10	M10×70	19	24	2.3	8	8	262

Parts for tuning the toggle clamp power

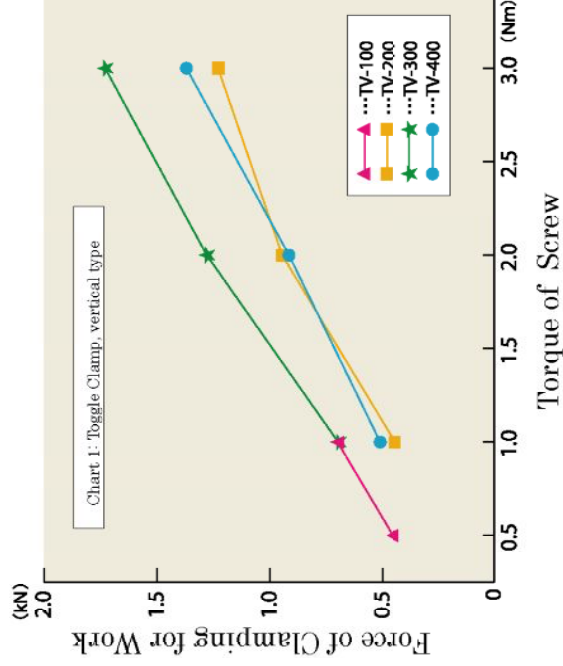
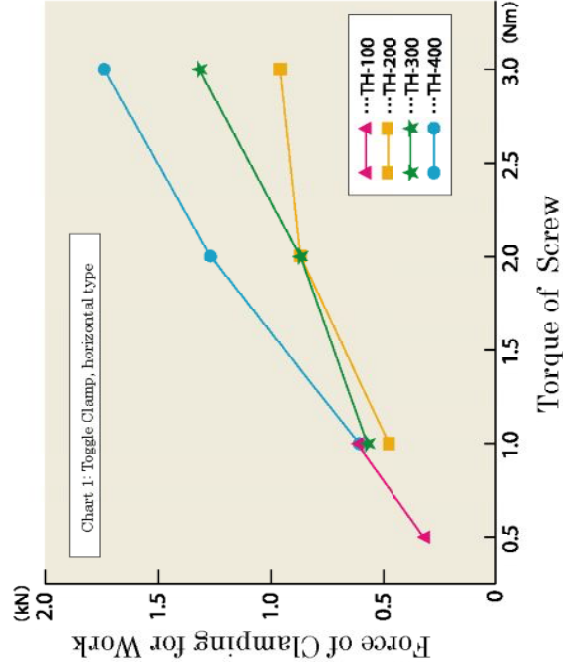


型番	T	R	I	U	V	W	X	Y	Z	備考	材質:SS400
M6-50	13.5	M6 x 50	12.4	1.6	5	4.5	50	6	3	TH100-00, TV100-00	
M8-50	18	M8 x 50	15.4	1.6	6	6	50	8	4	TH200-00, TV200-00	
M8-70	18	M8 x 70	16.4	1.6	6	6	70	8	4	TH300-00, TV300-00	
M10-70	24	M10 x 70	22	2.3	8	8	70	10	5	TH400-00, TV400-00	

How to configure the clamp See Figure A

- 1 Fix the upper lock nut tightly
- 2 Make the toggle mechanism clamped
- 3 Attach the edge of the clamp screw slightly on the work
- 4 By making use of the hexagonal hole, round and fix the clamp screw by hand
- 5 Make sure the toggle handle can move
- 6 Lock the upper Lock nut

Relation between the fixing torque of clamping screw, and the power of work ramp



Reference data

Please note that the data can vary by the frictional coefficient between clamping screw and nut

Above charts show the example describe the combination with a black painted clamping screw and a electrolysis Ni plated nut, and the data in these charts can only be useful for reference, not guaranteed.



(Reference Photo :0~6Nm)
Torque Wrench

FLECLAM Co., Ltd
4-3-58 Toyookacho Seki-city Gifu Japan
Tel 81-575-22-6860 Fax 81-575-24-6894